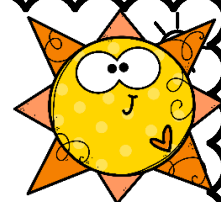




**Haiti Fair Trade  
Coffee ,Tea , and Chocolate  
Sale August 20-21, 2022**

**Pre-Order Form due by Wed. August 17,2022**

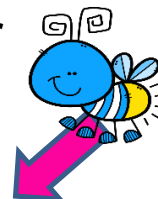


**Thank You For Supporting the Haitian And Equal  
Exchange Farmers by Buying Their Products At our  
Sales!**



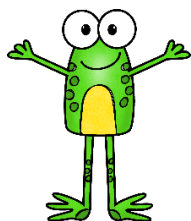
**For Pre-Orders: Fill out the PDF**

**your name, email address, telephone contact number  
check which mass you will pick up your order:**



**Then either:**

- Come by the office and drop off your order. Rita is there Mon.-Fri. 8-4.
- Call in your order to Rita at 540-774-0066 or fax it in at 540-774-2148
- Email the completed pdf attention to Rita: secretary@oln-parish.com
- Put the completed form in the offering church basket in an envelope with a check , or cash for the exact amount. **Please mark it Haiti coffee sales.**
- Questions? Call Rita at 540 -774-0066
- Questions about coffee, tea, chocolate call Rita,  
Joanne Hawley at 540-588-6039, or Mickey Strayer at 540-774-5821



**We will be only taking orders with check,  
or cash for the exact amount for this pre-order sale.**

**All orders and payments have to be in by  
Wednesday August 17, 2022**

- **Pick up will be in the Fellowship Hall after all masses.**  
**( You do not need to attend the mass, just come during that time period  
after mass for pick-up)**

**Remember you can buy more items  
when you stop by!**



# Haiti Fair Trade Coffee, Tea, and Chocolate Sale August 20-21, 2022

**Pre-Order Form due by Wed. August 17, 2022**

Clip Art Used!



Name \_\_\_\_\_

Phone \_\_\_\_\_ email \_\_\_\_\_

Payment type: Check \_\_\_ Check Number \_\_\_\_\_ Cash \_\_\_\_\_

Please **check** which time you will pick up your order after mass

- Sat: June 18: 6:00 – 6:15 pm \_\_\_\_\_
- Sun: June 19: 8:30 – 8:50 am \_\_\_\_\_
- Sun: June 19: 10:30 -10:50 am \_\_\_\_\_
- Sun: June 19: 12:30 -12:50 am \_\_\_\_\_

## Equal Exchange Coffee: \$11/Bag

- \_\_\_ Decaf Whole Bean Full City Roast
- \_\_\_ Breakfast Blend Ground (Drip)
- \_\_\_ Breakfast Blend Whole Bean
- \_\_\_ Decaf French Roast Ground
- \_\_\_ Ethiopian Ground Medium Roast
- \_\_\_ Percolator Fellowship Blend Regular
- \_\_\_ Percolator Fellowship Blend Decaf



**Write how many of  
each item  
you want to order  
next to the item:**

### Total:

- \_\_\_ Coffee
- \_\_\_ Tea
- \_\_\_ Choc. Candy
- \_\_\_ Choc. Chips
- \_\_\_ Cocoa

**Final Cost:** \_\_\_\_\_

## Just Haiti Coffee \$11/ Bag

- \_\_\_ Medium Roast Drip
- \_\_\_ Dark Roast Drip
- \_\_\_ Medium Roast Whole Bean
- \_\_\_ Dark Roast Whole Bean



## Equal Exchange Chocolate Bars: \$4 each.

- \_\_\_ Caramel Crunch w/Sea Salt
- \_\_\_ Dark Chocolate Mint Crunch
- \_\_\_ Dark Chocolate w/ Orange
- \_\_\_ Lemon Ginger w/ Black Pepper
- \_\_\_ Milk Chocolate
- \_\_\_ Panama Extra Dark 80% Chocolate
- \_\_\_ Very Dark Chocolate 71%
- \_\_\_ Dark Chocolate Mini: **4/\$1**

\_\_\_\_\_ total mini

## Equal Exchange Tea: \$5.00 / box

- \_\_\_ Chai
- \_\_\_ Chamomile Tea
- \_\_\_ Earl Grey
- \_\_\_ English Breakfast
- \_\_\_ Decaf English Breakfast
- \_\_\_ Ginger
- \_\_\_ Green
- \_\_\_ Irish Breakfast
- \_\_\_ Peppermint
- \_\_\_ Rooibos

## Equal Exchange Baking Semi-Sweet Choc, Chips: \$4.50 bag

\_\_\_ Baking Chocolate Chips: Semi-Sweet

## Equal Exchange Cocoa: \$8 /can

- \_\_\_ Baking Cocoa 8 oz can
- \_\_\_ Dark Hot Cocoa 12 oz can
- \_\_\_ Hot Cocoa 12 oz can
- \_\_\_ Spicy Hot Cocoa 12 oz can

