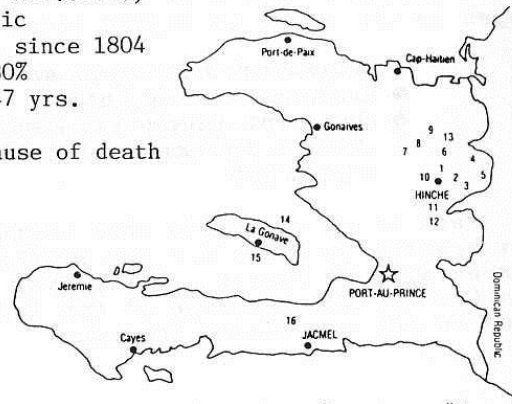


FACTS:

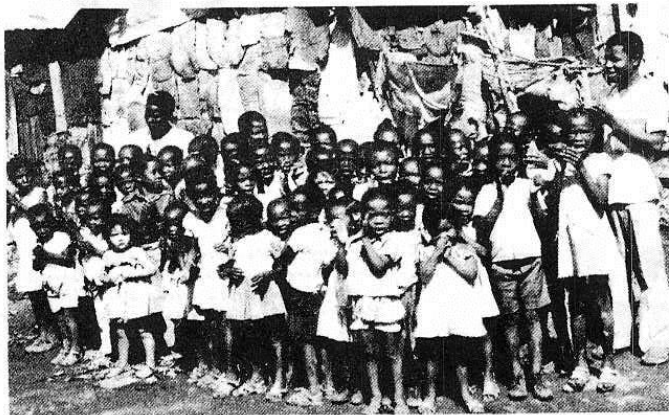
Location: 800 mi. from Miami
Size: approx. state
of Maryland
Pop.: 5 million (1 mil. exile)
Religion: R. Catholic
Politics: Republic since 1804
Illiteracy: over 80%
Life expectancy: 47 yrs.
Income: \$299/yr.
Malnutrition #1 cause of death

Haiti



Parishes twinning with Virginia Parishes; Papaye - #1.

"There are so few educated people - good teachers are badly needed."



"If a group like your parish became interested in helping with these needs we would be most grateful."

Sister Anne Bezaire, Papaye, Haiti

1989-1990



ANNOUNCING: TWINS!
Our Lady of Nazareth Parish
2505 Electric Road, Southwest
Roanoke, Virginia 24018
USA



Ecole Normale de Papaye
Presbytère de Hinche
C.P. 1594
Hinche, Haiti

Haiti

A journey which led to Roanoke...

In 1981, 8 Haitian men left the migrant camps near Chilhowie and came to Roanoke seeking a better life. The people of Our Lady of Nazareth parish opened their homes and their hearts to these exiles who were fleeing the poverty of their homeland.

The journey of these men so moved our Bishop Walter Sullivan that he not only purchased a home here in Roanoke to assist in their resettlement but has designated Haiti as the official outreach area of our diocese. God often works through humble beginnings. The faith response of Nazareth almost 10 years ago has resulted in a diocesan-wide commitment to the poorest country in the western hemisphere.

Now we are invited to extend hospitality in another way. The Parish Pastoral Council has approved a proposal to enter a twinning relationship with Haiti, the 24th to do so.

What does it mean to twin?

Twinning is basically a response to the Gospel call to be mindful of the poor. We have been paired with Papaye Normal School located in the rugged, mountainous interior of Haiti, about 80 miles north of Port-au-Prince the capital city (see map).

We are learning, through written correspondence, about life in Papaye. Sister Anne Bezaire writes: "There are about 80 students...they are very beautiful indeed and the hope of this country rests in them. The level of poverty is so extreme many students cannot pay the tuition. The library is very meagre - we don't have enough chairs for all the classrooms and the ones we do have keep breaking..."

What does twinning mean as parish, as parishioner?

Sister Anne cautions against sending material aid due to transportation costs and difficulties with customs. So, some of the ways we might be open to the needs in Papaye could include:

- **Adopt a student: any amount, even \$1 / month**
- **Donate cost of a chair, a book**
- **Be a pen pal - translators are available**
- **Join a 10 - day diocesan retreat - offered 3 times a year in Haiti**

Each of us can begin this venture in friendship by praying each day for the people of Haiti, and especially of Papaye. The prayer below is written in Creole, the language of the Haitian people, and in our own native English.

Ròm 12:13-18

Bay moun kop viv pou Bon Die yo
konkou, lè nou ouè yo nan bezouin.
Rèzévoa moun ki vi-n lakay nou byin...
Fè kè-n kontan ak moun ki kontan,
kriyé ak moun kap kriyé. Viv bien
youn ak lit. Fa kilè lògèy monte
tèt nou, viv tankou moun ki san
pretansyon... Fè tou sa nou kapab
pou nou viv bien ak tout moun mèzi
nou ouè nou ka fè li.



Romans 12:13-18

If any of the saints are in need you must share with them, and you should make hospitality your special care... Rejoice with those who rejoice and be sad with those in sorrow. Treat everyone with equal kindness; never be condescending but make real friends with the poor... Do all you can to live at peace with everyone.